

# Ceiling Batten



*What do you need today?*

## STRATCO CEILING BATTENS

The Stratco Ceiling Batten is a quality product that benefits from a combination of high strength and rigidity with low weight and cost. It is compatible with all major domestic ceiling boards, which makes the Stratco Ceiling Batten an economical, easy to use and versatile system.

Due to their steel construction, Stratco Ceiling Battens will help control timber rafter movement, which will assist in preventing the plasterboard ceiling from cracking in the future. Stratco Ceiling Battens are manufactured from hi-tensile zinc/alum steel that delivers superior strength and durability.

- » The return edge is folded back on itself, providing a safe edge and a rigid profile.
- 0.42mm thick hi-tensile steel is very strong, light weight and is easy to cut with tin snips.
- The 20mm high profile provides strength and is designed to nest for easy handling and storage.
- A cavity on the bottom prolongs the batten's life by preventing condensation from forming.
- A textured surface makes installation easy when locating and screwing plasterboard fixings.
- Stratco Ceiling Battens are supplied in 6100mm lengths for easy handling and storage.



**QUEENSLAND**

**ORMEAU Ph: (07) 3451 4444** 1 Mavis Crt

- **CRESTMEAD Ph: 3803 1355** 179 Magnesium Dve
- **TOOWOOMBA Ph: 4638 9322** 167 Herries St
- **VIRGINIA Ph: 3865 3544** 2037 Sandgate Rd
- **CABOOLTURE Ph: 5499 3055** 17 Concorde Pl
- **MAROOCHYDORE Ph: 5476 5920**

Cnr. Maroochydores Rd & Pike St, Kunda Park

- **GOLD COAST Ph: 5525 1511** 108 Eastlake St, Carrara
- **CAPALABA Ph: 3245 4777** Cnr. Smith St & Redland Bay Rd
- **ARCHERFIELD Ph: 3276 8844** Cnr. Beaudesert & Granard Rd

**NEW SOUTH WALES**

**HUNTINGWOOD Ph: (02) 8811 7200** 15 Liberty Rd

- **CAMPBELLTOWN Ph: 4625 5900** 22 Blaxland Rd
- **PENRITH Ph: 4728 5600** 125 Coreen Ave

**AUSTRALIAN CAPITAL TERRITORY**

**FYSHWICK Ph: (02) 6228 1881** Unit 1/187 Gladstone St

**VICTORIA**

**KILSYTH Ph: (03) 9728 4200** 73 - 75 Canterbury Rd

- **KILSYTH SOUTH Ph: 9761 6922** 2/158 Canterbury Rd
- **THOMASTOWN Ph: 9761 6922** 241 Settlement Rd
- **DEER PARK Ph: 9761 6922** 1027 Western Hwy

**SOUTH AUSTRALIA**

**GEPPE CROSS Ph: (08) 8349 5555** 125 Cavan Rd

- **RICHMOND Ph: 8349 5559** 263 Richmond Rd
- **LONSDALE Ph: 8349 5559** Cnr. Dyson & O'Sullivan Beach Rd
- **ST AGNES Ph: 8349 5559** 129 - 131 Tolley Rd
- **GAWLER Ph: 8522 1132** 16 - 18 Main North Rd, Willaston
- **GOOLWA Ph: 8555 2825** 29 Hutchinson St
- **VICTOR HARBOR Ph: 8552 5164** 95 Victoria St
- **WHYALLA Ph: 8645 7344** Ian St, Whyalla Norrie

**WESTERN AUSTRALIA**

**CANNING VALE Ph: (08) 9455 1911**

Corner of Bannister Road and Hopewell Street

- **MALAGA Ph: 9249 4911** Cnr. Marshall Rd & Energy St
- **BUNBURY Ph: 9791 4200** Cnr. Strickland St & Zaknic Pl
- **KALGOORLIE Ph: 9022 4805** Cnr. Cassidy & Dugan St

**NORTHERN TERRITORY**

**BERRIMAH Ph: (08) 8947 2299** 780 Stuart Hwy

- **MILLNER Ph: 8948 4844** Homemaker Village, 356 Bagot Rd
- **ALICE SPRINGS Ph: 8952 2826** 6 Ghan Rd

**NEW ZEALAND**

**CHRISTCHURCH Ph: (03) 338 9063** 55 Hands Rd

## SPECIFICATIONS

Stratco Ceiling Battens are manufactured from hi-tensile zinc/alum steel and comply with Australian Standard 1397/G550 AZ150.

Base Metal Thickness	0.42 mm
Yield Strength	550 MPa
Coating Mass	150 g/m <sup>2</sup>
Batten Mass	0.35 kg/m
Maximum Span*	1200 mm (1500**)
Maximum Spacing	600 mm

\* Maximum span continuous over at least two spans.  
\*\* 1500mm maximum batten span is for WA only.

Note: The maximum span and spacings shown allow for a plasterboard thickness of up to 13mm. Refer to the appropriate manufacturers specifications for details on the ceiling installation.

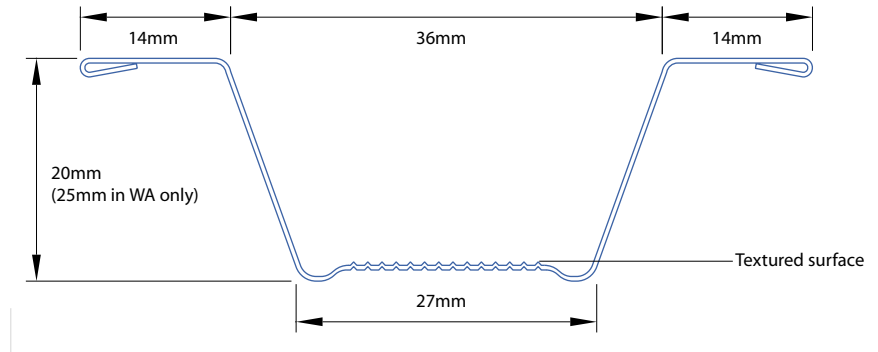


Figure 1

## INSTALLATION

### Fixing to Timber Joists

Fasten the ceiling batten at every support with a 10x25mm timber fixing screw (minimum fixing size) through each flange as shown in figure 2.

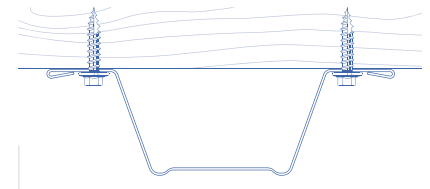


Figure 2

### Fixing to Steel Joists

Fasten the ceiling batten at every support using a 10x16mm hex-head self-drilling screw (minimum fixing size) through each flange as shown in figure 3.

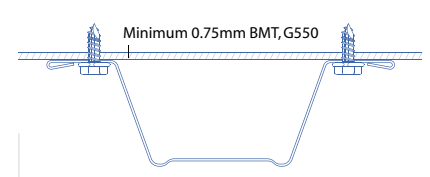


Figure 3

### Attaching the Plasterboard

Fasten the plasterboard to the ceiling batten according to the plasterboard manufacturer's specifications, refer to figure 4 for an example.

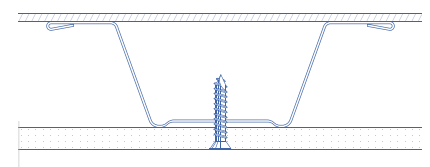


Figure 4

## IMPORTANT

Stratco Ceiling Battens are not to be walked on. For additional information such as handling, storage, environmental considerations and material compatibility, refer to the Stratco "Selection Use and Maintenance" brochure.